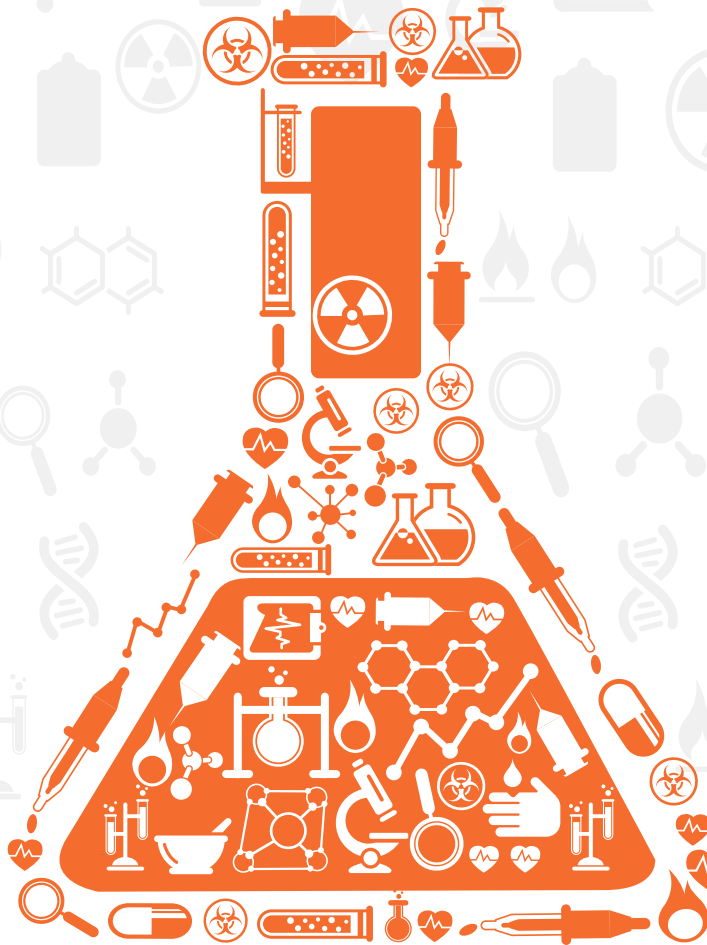


**TCI**

*Supply Chain  
Solutions*

**SECURE  
YOUR BUSINESS**



**WE ANALYZE, OPTIMIZE,  
FORMULIZE, INTERNALIZE, SYNCHRONIZE,  
YOU CAPITALIZE**

**CHEMICAL**

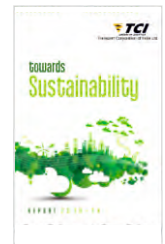


## Vision

TCI Group should be a **Customer Oriented, Multi Technology, Multi Specialist** transport system in the Indian and International markets, with a **proven commitment to excellence** in every facet of activity and **pursuit of value based policies to satisfy aspirations** of society, customers, vendors, employees, shareholders and the transport industry.

## Group Credibility

- Incorporated in 1958, as a "One Man, One Truck, One Office" company, now India's Leading integrated supply chain and logistics solutions provider.
- Extensive own infrastructure of 1000+ real time ERP enabled offices, modern warehouses of over 12 million sq.ft covered area with 6000+ strong workforce.
- TCI takes pride in being a good corporate citizen by adhering to good corporate governance practices and undertakes social economic welfare activities under the aegis of TCI Foundation.



## Values that drive the Company



### Customer Focus

For the customer with the customer



### Ownership

To work with the passion of an entrepreneur, be self motivated & take pride of belonging with the company



### Responsiveness

To make customer responsiveness our core competency and align all aspects of business to deliver our best



### Empathy

To incorporate emotional intelligence into our day to day operations & create an enabling work environment ruled by respect for one and all

## Single Window Solutions

It is with the amalgamation of many complimenting forces that a complete solution emerges. Group TCI has moved seamlessly internally within its divisions and externally across boundaries to serve business among various industry verticals by being an intrinsic part of the customer's logistics process.

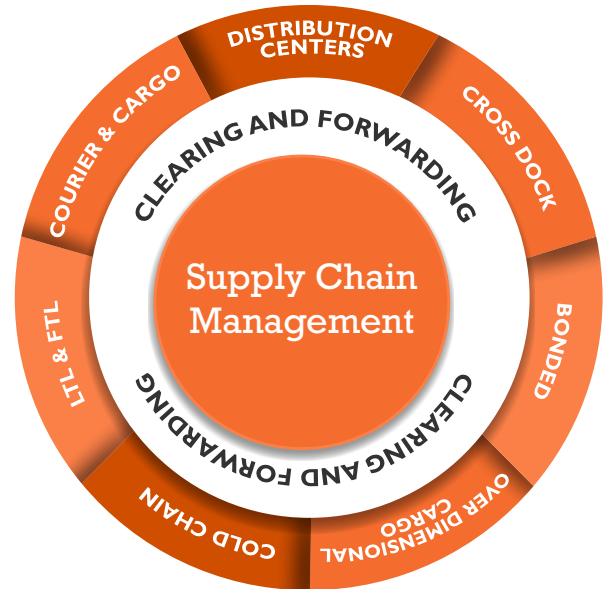


## Mission

- To be the **Most Admired** service provider of Integrated Supply Chain Solutions.
- To **Deliver Value** to our customers and stakeholders by adopting best practices and continuous innovation.

## Supply Chain Management : Conceptualisation To Execution

- TCI SCS brings in a lot of commitment in its partnership with its clients. Being in a mission critical service industry, we design system and processes around your wish-list and monitor operations to the last detail in ensuring an agile and lean supply chain for you.
- Operating in the value space, SCS has a rich talent pool for key industry verticals to provided tailor made Solutions
  - Dynamic Supply Chain Network Design.
  - Supply Chain Execution : As a Lead Logistics Provider ( 3PL / 4PL )



## Consultancy

With successful case studies of Network Design and Supply Chain Re-engineering across various industries, TCI SCS is well equipped to offer the best solution for your supply chain.

With complex supply chains yet abbreviated product life cycle, network re-design post GST:- Companies need to drive change smartly and efficiently. Our consulting service can help you achieve the same through its bouquet of services that ranges from:

- Supply Chain Strategy Design
- Inventory Planning, Management and Reduction
- Distribution Network Modeling and Optimization
- Warehouse / DC Design

These services are provided by the team of supply chain experts with sound knowledge of Global Best Practice along with understanding of local conditions.



# “Secure” Your Business with TCI Supply Chain Solutions’

## Ensuring Safe Handling of Solids, Liquids & Gases in Both Bulk & Packaged Form.

Chemical is a complex industry- products range from solids to liquids to gases and nature from Inert to Hazmat. The complexity of handling, storage and transportation is compounded with the fragmentation of the industry and lack of domestic standards.

We understand the unique requirement of chemical shipments. To ensure your cargo is safe and secure, TCI SCS provide micro and macro-level management of the Chemical Supply Chain. **“Responsible Care”** is the mantra of safe and environmentally conscious management as we seek to build global HSE standards in the Chemical industry.

## Ensuring Safe movement of Liquid Chemicals

### - In ISO-Tanktainers

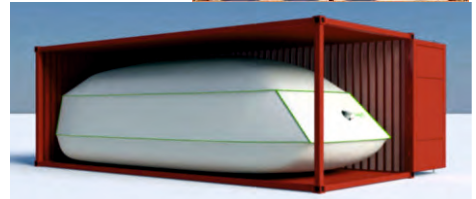
- Movement of Non-hazardous/hazardous chemicals in ISO Tanktainers by Road & Rail.
- TCI has both SS & MS ISO Tanktainers.
- Weight carrying capacity of each Tanktainers is around 25-26k L.
- The Tanktainers has side access and hard open top
- These Tanktainers can be used both on Rail and Road.
- Full rake & Piecemeal movement of ISO Tanktainer by Rail to encourage “Green Logistics”.

### - In drums

- Movement of Non-hazardous chemicals in polypropylene drums by both Road & Rail.
- Weight capacity of each drum is around 230-250 ltrs.
- 1 pallet can carry 4 drums.
- Shrink wrap & lashing strap for the safety of the cargo

### - In Flexi tanks

- Flexi tank is designed for the transportation of non-hazardous chemicals in 20' ISO containers.
- It is conceived as expendable packing for the transportation of liquid.
- The weight carrying capacity of Flexitanks varies from 10-24k L.
- Flexi tanks offer a dynamic, flexible, safe and cost effective solution for all bulk liquid transport requirements





## Ensuring Safe movement of Dry Chemicals

### - In Jumbo bags

- Movement of dry chemicals in Jumbo bag.
- Weight carrying capacity of each Jumbo bag is around 1.5 ton.
- Its precise design make these suited for a wide range of end products like Soda Ash, Carbon Black, Dyes, Cement, Non flammable Chemicals and others.

### - In Container Liners

- Dry bulk movements in “**Container liners**” for Bulk handling of cargo in 40’ & 20’ containers
- It’s a protective shield between the bulk cargo and container walls, ensuring all benefits of advanced bulk packaging.
- The type of products typically transported by this method should be dry & free flowing with generally particle sizes being less than 10mm
- The weight carrying capacity is around 22-28 MT.



## Ensuring Safe movement of Gases

### - In Gas Tankers



- The movement of gases is done in customized Stainless steel for both:
  - Cryogenic gases.
  - Specialty Gases
- CCOE Approved.
- Drivers equipped with Dangerous Good license
- Specially designed Pressure Circuit to maintain the temperature -pressure while in transit.

### - Safe In-plant Services

- Bagging and Debagging.
- Silo Charging.
- Line Charging.
- Quality Check at all steps.
- End of Line Packing, Labeling,
- Customized Palletization.



## Ensuring Safe EXIM of Liquid Bulk



- Movement of Non-hazardous / hazardous chemicals in SS ISO Tanktainers with baffles.
- Movement to countries like China, Sri Lanka, Singapore, Far East and South Asia, Europe & USA.

## Ensuring Safe warehousing Services

### - HSE Compliant Warehousing



- Storage of Both Solid & liquid Chemicals.
- Chemically compliant warehouse with HSE standards.
- Custom Clearance: Handling the complexity of the norms related to the product.
- Container de-stuffing and storage as per specific norms.
- Order management and last mile delivery.
- Record and MIS management.



# Core Competencies

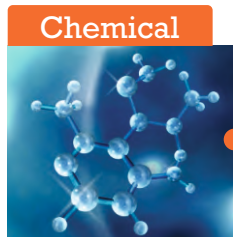


The core values offered by TCI Supply Chain Solutions are operating on shorter product life cycles, scientifically and professionally managed inventory, supplemented with state-of-the-art material handling equipment warehousing and multi-modal transportation. And also managing and integrating the flow of information amongst hundreds of outsourced supply chain partners and the enterprises that employ them.

## Key Industries



- Network Design
- Vendor to DC / Store platform and logistics
- Distribution Centre Design, Management,
- Value Added Services : QC, kitting, packaging
- Distribution - Milk Run, B to C, Collection on Delivery
- Reverse Logistics & Processing



### Adherence to Statutory Health Safety & Environment Practices

- Solids, Liquids, Gases
- Production Logistics
- Raw Material Stores, QC, Silo Charging
- Finished goods store & Value Added Services
- Freight Desk, Transportation
- EXIM Services : Bonded warehousing, Custom Clearance



### Design to Execution:

- Production Logistics, Returnable Management, Kitting and Line Feeding
- CBU Logistics, Multi-modal Logistics, Yard Management
- Aftermarket Logistics & Distribution Center
- Parts Consolidation Center (PCC) for EXIM



### Consumer Products:

- Production Logistic, Kitting and Line Feeding
- Distribution for B- B & B-C over surface & air
- Distribution Center Management
- Aftermarket & Reverse Logistics

### Projects & Equipment

- Site logistics Plan & Execution
- Yard / Distribution Center Management
- Reverse Logistics



- State of the art Reefer vehicles
- Temperature view over GPS
- City Delivery & Cross Country
- Emerging Cold Room network



### Ambient & Cold Chain

- Distribution Center Management
- Surface & air transportation
- 24 hour Track & Trace
- Advanced monitoring of Temperature sensitive shipments.

### 5 Key Reasons to Prefer TCI Supply Chain Solutions

- Partnership Approach for growing your business
- Focus on corporate core competence
- Improve operational efficiency and productivity
- Improve customer service
- Cycle time reduction

# Lead Logistics Provider 3PL / 4PL

## Production Logistics: (Supplier / Port of Entry or Exit to Plant):

- Just-In-Time (JIT)/ Just-In-Sequence (JIS)/ Vendor/ Co-Managed Inventory (VMI/ CMI)
- Inplant Stores and Finished Goods Warehouse / Yard Management.

## Finished Goods Logistics (Outbound from Plant / Port of Entry) / Freight Desk Management:

- Demand Chain Management from Production/ Trading to Customer.
- Multi-Modal and Specialised Logistics Solutions.
- Consolidation of Carriers under a 24x7 Operation Control Tower.

## Warehousing / Distribution Centre Management:

- Modern high-rise Warehouses equipped with WMS and RF enabled HHT for efficient throughput.
- Import / Export Custom and Excise bonded warehouse.
- Value Added Services from kitting to Light Assembly.

## Key Account Management (KAM)

TCI SCS is a Customer Facing organization delivering on the SLA's (Service Level Agreement) by measurable KPI's (Key Performance Indicators).

The KAM Team operates like a Control Tower and manages information flow among suppliers, customers and intermediaries.

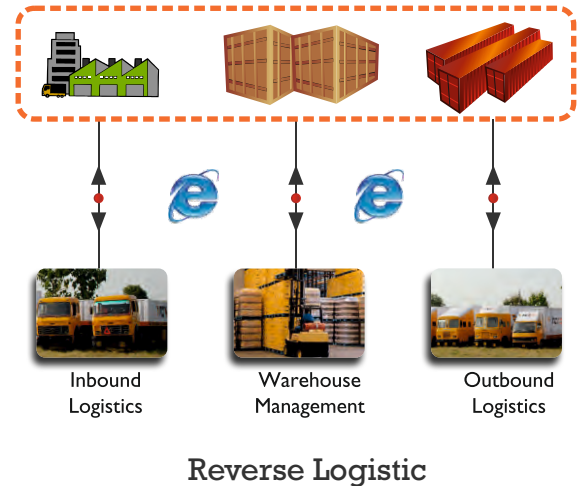
This process enables continuous control on exceptions and abnormalities.

Continuous improvement leading higher level of efficiencies at lower cost through:

- Kaizen and Quality Circle initiatives
- Elimination of MUDA in the chain

Typically the team operates as an extension of the client and echo's end user needs as an intrinsic part of the client's supply chain.

## Collaborative Supply Chain Execution



## Distinctive KPI's

### Warehousing

- OTIF (One Time In Full)
- Inventory Accuracy
- On time Delivery
- FMFO / FMFE / FIFO Hygiene
- Safety & Hygiene

### Production / Inbound Logistics

- Window Time Adherence
- Transit Time
- Alerts and Alarms
- Safety

### Finished Goods / Outbound Logistics

- Order to Asset deployment
- On Time Delivery
- Safe Delivery

# AWARDS AND ACCOLADES

**“Manufacturing  
Supply Chain  
Service Provider  
of the Year –  
Overall”**

Presented  
By  
Kamikaze  
B2B Media  
Consecutively  
from  
2014 to 2018

**“Best  
Warehouse  
Management”**

Presented  
By  
Indian  
Chamber of  
Commerce  
Year 2018

**“Effective  
Retail  
Through  
Supply  
Chain  
Award”**

Presented  
By  
Asia Retail  
Congress  
Consecutively  
from  
2011 to 2018

**“Domestic  
Logistics  
Services  
Company  
of the Year”**

Presented  
By  
Frost  
& Sullivan  
Year 2015

**“Manufacturing  
3PL Service  
Provider of  
The Year”**

Presented  
By  
Kamikaze  
B2B Media  
Year 2014

**“Fleet  
Owner of  
The Year in  
The  
Automotive  
Segment”**

Presented  
By  
Mahindra  
Year 2013

**“Supply Chain  
Innovation of  
the Year  
for  
E-Commerce”**

Presented  
By  
Kamikaze  
B2B Media  
Year 2015

**“Company  
of The Year”**

Presented  
By  
Express  
Logistics &  
Supply Chain  
Conclave  
Year 2017



A division of Transport Corporation of India Ltd.

TCI House, 69 Institutional Area, Sector - 32, Gurugram- 122 001, Haryana, India.

Tel: +91-124-2381603 | Fax: +91-124-2384085, Email: [bd.crho@tcil.com](mailto:bd.crho@tcil.com), [chemical.lho@tciscs.com](mailto:chemical.lho@tciscs.com) | Website: [www.tciscs.com](http://www.tciscs.com)