

# **SIMPLIFI YOUR BUSINESS**



**WE ANALYZE, OPTIMIZE,  
FORMULIZE, INTERNALIZE, SYNCHRONIZE,  
YOU CAPITALIZE**

**OMNI  
CHANNEL  
RETAIL**



# About TCI SCS

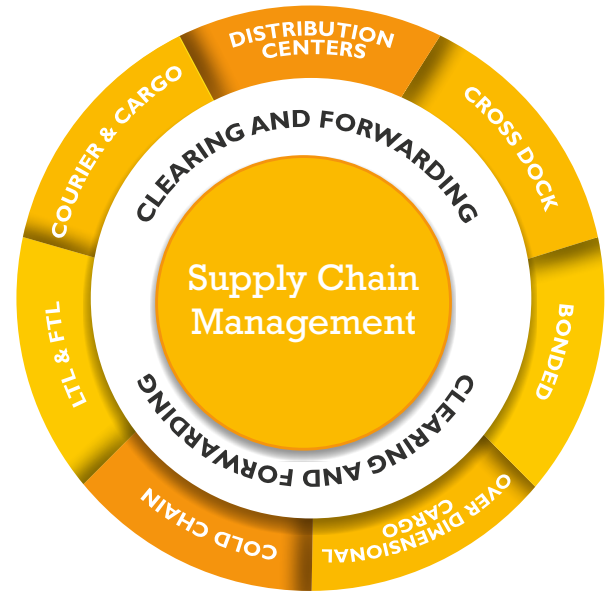
**TCI SCS was conceived with a mission to be world class in India, inspite of the challenges in the ecosystem.**

## Mission

- To be the **Most Admired** service provider of Integrated Supply Chain Solutions.
- To **Deliver Value** to our customers and stakeholders by adopting best practices and continuous innovation.

## Supply Chain Management : Conceptualisation To Execution

- TCI SCS brings in a lot of commitment in its partnership with its clients. Being in a mission critical service industry, we design system and processes around your wish-list and monitor operations to the last detail in ensuring an agile and lean supply chain for you.
- Operating in the value space, SCS has a rich talent pool for key industry verticals to provided tailor made Solutions.



## Core Competencies

The core values offered by TCI Supply Chain Solutions are operating on shorter product life cycles, scientifically and professionally managed inventory, supplemented with state-of-the-art material handling equipment warehousing and multi-modal transportation. And also managing and integrating the flow of information amongst hundreds of outsourced supply chain partners and the enterprises that employ them.

## Key Verticals



Retail



Hi-Tech



Mobility



Heavy Machinery



Agri



Chemical



Pharma & Health Care

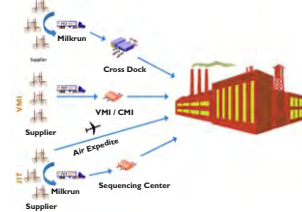
# Conceptualization to Execution

## Supply Chain Execution as a 3PL / 4PL



### Production Logistics: (Supplier / Port of Entry or Exit to Plant):

- Just-In-Time (JIT)/ Just-In-Sequence (JIS)/ Vendor/ Co-Managed Inventory (VMI/ CMI)
- Inplant Stores and Finished Goods Warehouse / Yard Management.

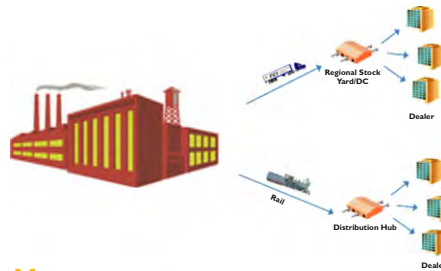


- Window Time Adherence
- Transit Time
- Alerts and Alarms
- Safety



### Finished Goods Logistics (Outbound from Plant / Port of Entry) / Freight Desk Management:

- Demand Chain Management from Production / Trading to Customer.
- Multi-Modal and Specialised Logistics Solutions.
- Consolidation of Carriers under a 24x7 Operation Control Tower.

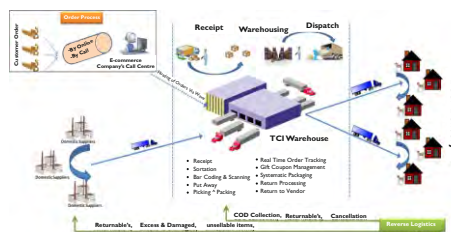


- Order to Asset Deployment
- On Time Delivery
- Safe Delivery



### Warehousing / Distribution Centre Management:

- Modern high-rise Warehouses equipped with WMS and RF enabled HHT for efficient throughput.
- Import / Export Custom and Excise bonded warehouse.
- Value Added Services from kitting to Light Assembly.



- OTIF (One Time In Full)
- Inventory Accuracy
- On Time Delivery
- FMFO / FMFE / FIFO Hygiene
- Safety & Hygiene

## Consultancy

With successful case studies of Network Design and Supply Chain Re-engineering across various industries, TCI SCS is well equipped to offer the best solution for your supply chain.

With complex supply chains yet abbreviated product life cycle, imperatives like introduction of GST:- Companies need to drive change smartly and efficiently. Our consulting service can help you achieve the same through its bouquet of services that ranges from:

- Supply Chain Strategy Design
- Distribution Network Modeling and Optimization
- Warehouse / DC Design
- Inventory Planning, Management and Reduction

These services are provided by the team of supply chain experts with sound knowledge of Global Best Practice along with understanding of local conditions.



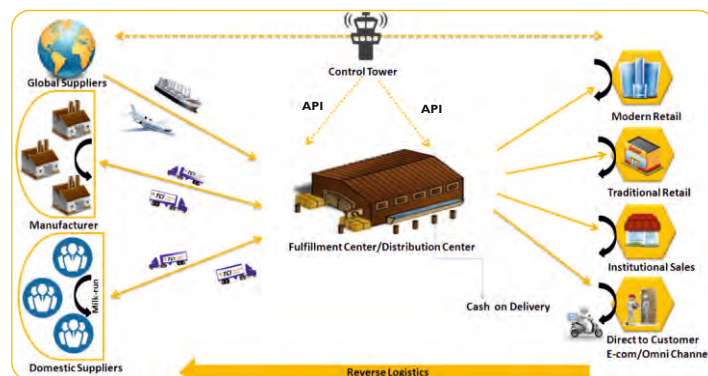
# “Simplifi”

## Your Business with TCI Supply Chain Solutions’

### Dynamic Face of “Retail Supply Chain”

The Retail landscape in India is metamorphosing with the advent of e-commerce into the game, leading to quick progression towards **Omni-channel supply chain strategy**.

We at TCI serve all supply chain models: Fulfilment centers for E-commerce - Inventory Model to Marketplace; as well as Distribution Centers and Mother Warehouses for Brick and mortar retail and consumer products, along with a hybrid model straddling both formats.



### Distribution / Fulfilment Centre

The DC/FC is the heart of retail supply chain. This Smart warehouse is a “learning factory” with infrastructure and technology for seamless fulfilment for all formats - B to B; B to C and D to C.

The warehouse received goods from Suppliers/ Sellers, carries out various value-added services like QC, Labelling/Tagging and then finally fulfils orders based on SLA by a Smart WMS- from Picking using Hand-Held Terminals to packing/kitting and finally to shipment to Stores or direct to Consumers.

This Modern warehouse is designed for optimizing the Cube of the building by Multi-tier shelving systems supported by VRC's and conveyors for optimizing productivity with work-flows built around the key deliverables of the brand.

The inhouse Integrated WMS (Warehouse Management System) is on the cloud and API friendly for a seamless flow of information to the stakeholders.

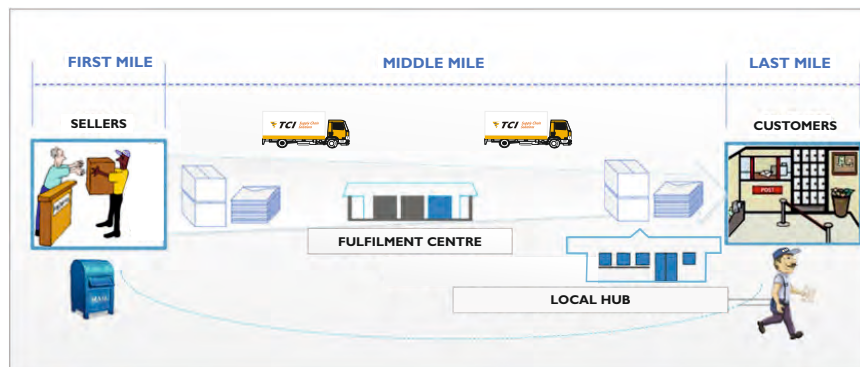


## First and Last Mile

The First Mile - Supplier Pickups – are executed Pan India using Milk-Run – Cross Docking or Direct to Warehouse model using our Scheduling ERP , enabling Window Time Adherence at Supplier and an Item wise visibility in the supply chain till delivery at Warehouse .

The last Mile is typically done by Milk Run for local Brick and Mortar stores including after-hours/ early-hour delivery for Malls.

Last mile for Consumers- Door step delivery - is facilitated by inhouse TMS (Transport Management Software) using multiple partners and delivering a single interface to the client.



## Control Tower

Besides logistics design support for the supply chain, conceiving the network or business process re-engineering, we also operate a Control Tower to ensure information flow across the chain.

This enables us to proactively take counter measures and remove potential abnormalities in the final service delivery. This includes.

- End to End SCM visibility
- SLA / KPI & Dashboards
- Cross Functional Support

### Typical KPI's

#### E-Commerce

QC to Shelf Returns

#### Brick & Mortar

O2M : Order to Manifest

Goods inwards on Time

Fill Rate - OTIF

#### Returns Management

RTO Processing - Return to Order (for undelivered, unopened packages.)

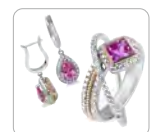
RBC - Return by Customer (Opened) for Reprocessing

Return to Vendors for RBC or unsold goods or QC issues

Returns from Stockist - Processing and /or Credit

Disposal of SLOB as per norms

## Categories in Omni-Channel Retail





# AWARDS AND ACCOLADES

**“Best  
Warehousing  
Service  
Provider”**

Presented  
By  
Ministry of  
Commerce  
and  
Industry 2022

**“Overall  
Excellence  
in Logistics  
& Supply  
Chain”**

Presented  
By  
CII - Scale  
Awards  
2022

**“Best 3PL  
Company  
of the Year”**

Presented  
By  
KamiKaze  
B2B Media  
2022

**“Best  
Diversified  
Company”**

Presented  
By  
KamiKaze  
B2B Media  
2022

**“Effective  
Retail  
Through  
Supply  
Chain”**

Presented  
By  
CMO Asia  
From 2017  
To 2020

**“Customer  
Centric  
Specialized  
Logistics  
Solutions  
Provider of  
the Year”**

Presented  
By  
Frost &  
Sullivan  
2019

**“Outstanding  
LSP for  
E-Commerce”**

Presented  
By  
Alden  
Global Value  
Advisors  
2019

**“Digital  
Transformation  
in 3PL  
Operation”**

Presented  
By  
Infinity Expo  
Private  
Limited  
2019



**A division of Transport Corporation of India Ltd.**

TCI House, 69 Institutional Area, Sector - 32, Gurugram-122001, Haryana, India.

Tel: +91-124-2381603 | Email: [tciscs@tciscs.com](mailto:tciscs@tciscs.com) | Website: [www.tciscs.com](http://www.tciscs.com)